

## APPLICARE EFFETTI AVANZATI ALLE SCRITTE

1. Come prima cosa dovete creare le scritte varie.



Fig. 1



Fig. 2

2. Ecco gli **effetti** da applicare :

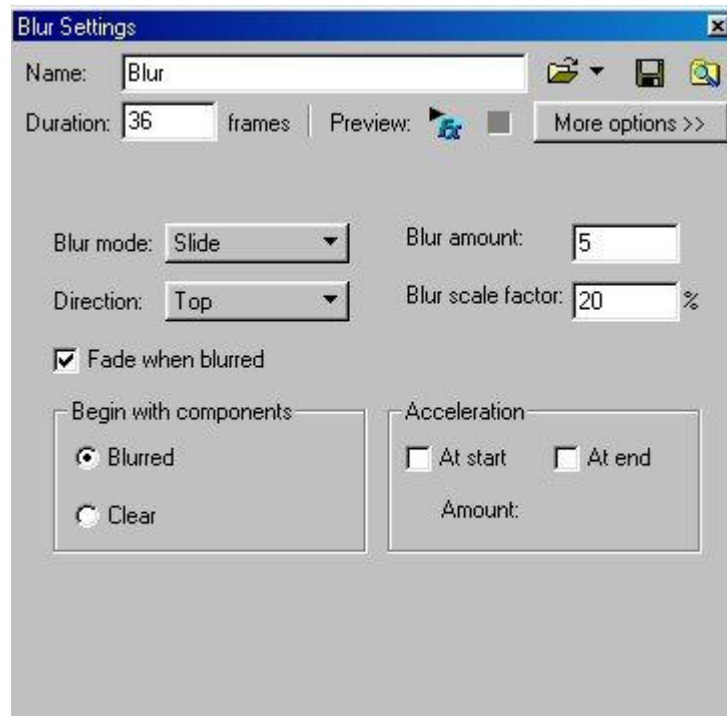


Fig. 3



Fig. 4

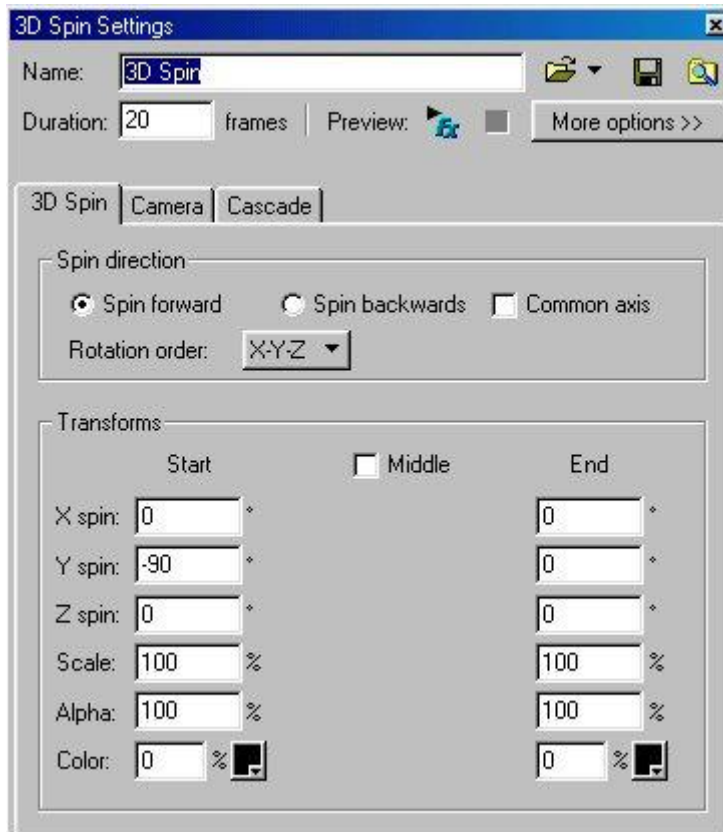


Fig. 5

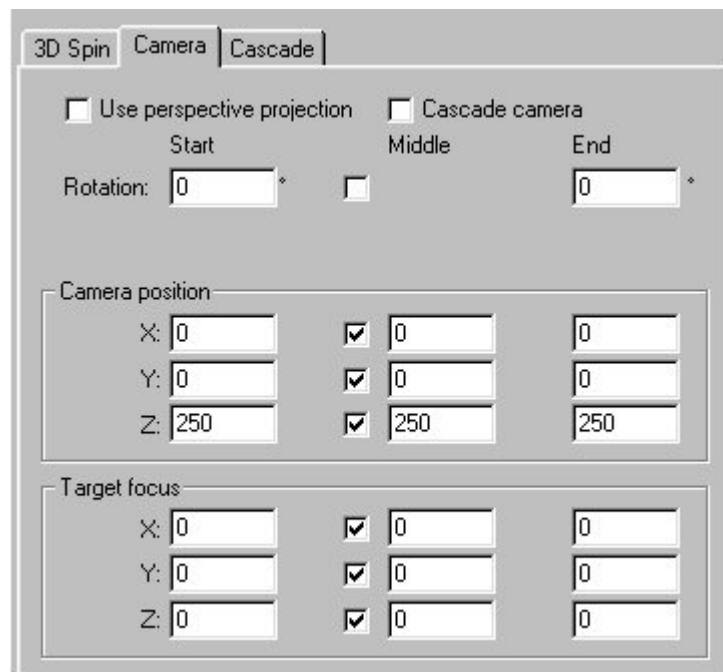


Fig. 6

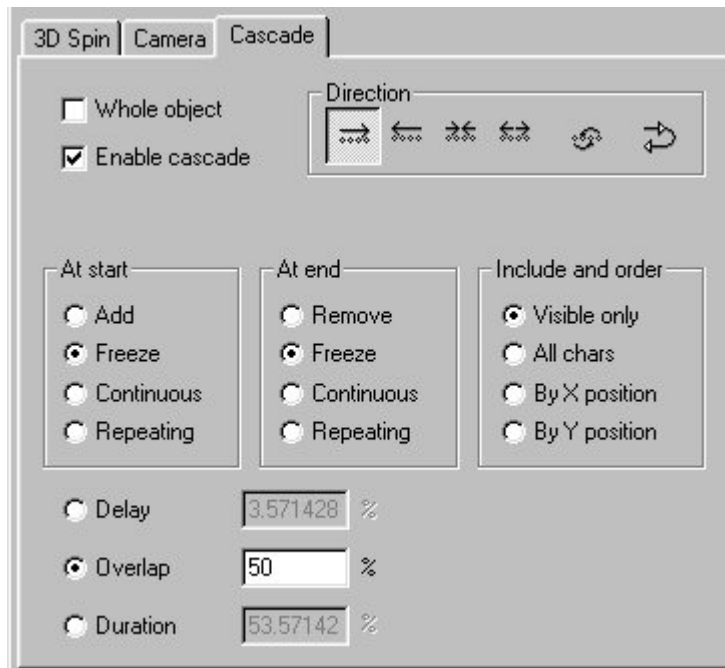


Fig. 7

3. A tal punto non rimane altro che salvare ed esportare l'applicazione.