

## APPLICARE GLI EFFETTI ARTISTICI

Vediamo ora di applicare diversi effetti Artistici alla seguente foto:



- *Effects -> Artistic Effects -> Aged Newspaper*, settate un valore dell'età per ottenere la foto di Fig. 1.



Fig. 1

- *Effects -> Artistic Effects -> Balls and Bubbles*, e seguire i settaggi di Fig. 2 e 3.

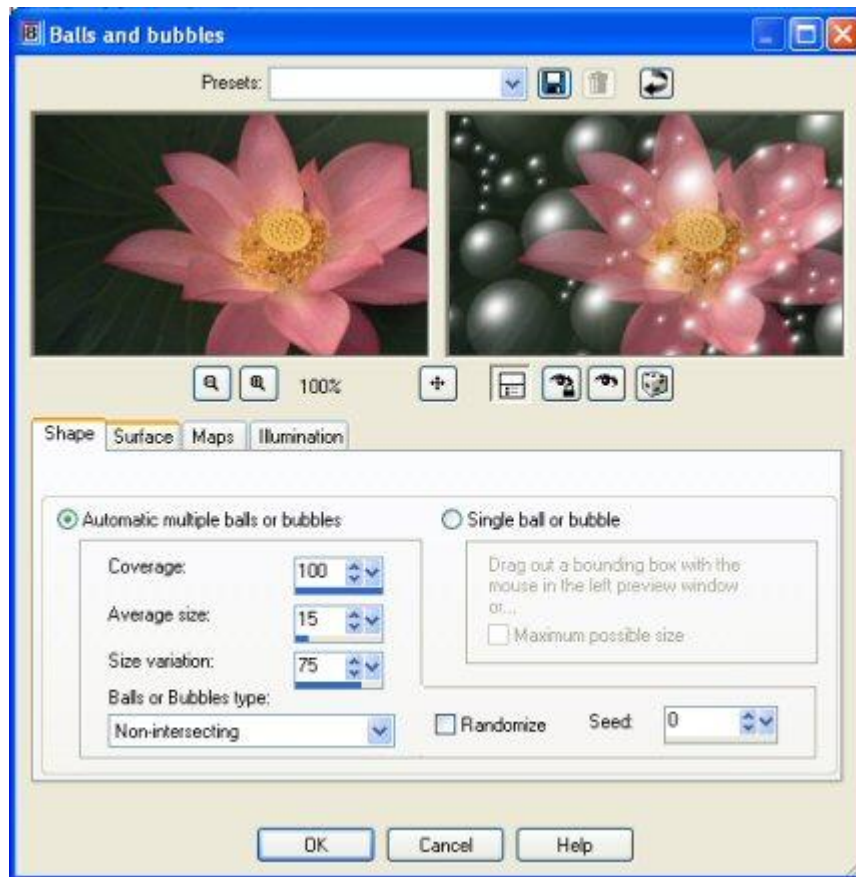


Fig. 2

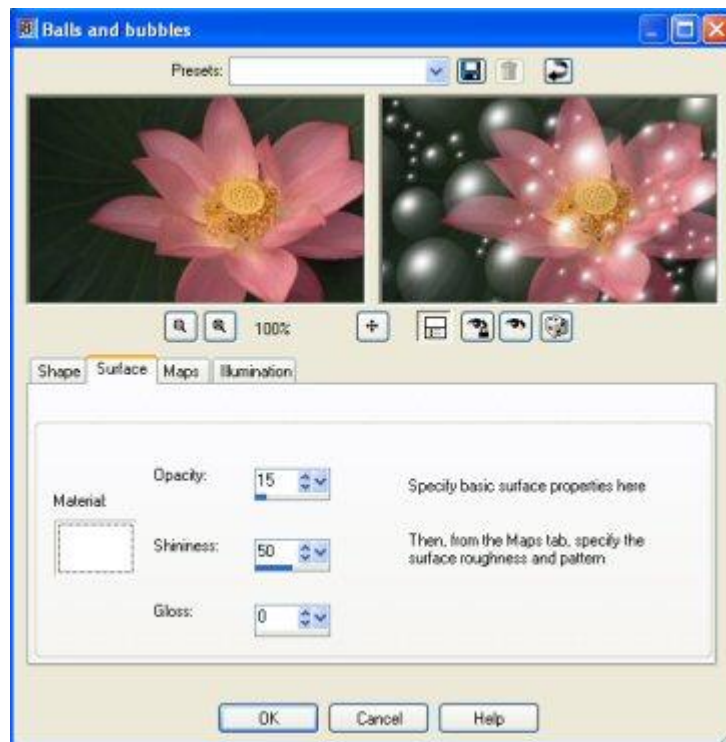


Fig. 3



Fig. 4

- *Effects -> Artistic Effects -> Chrome*, e seguire i settaggi di Fig. 5.

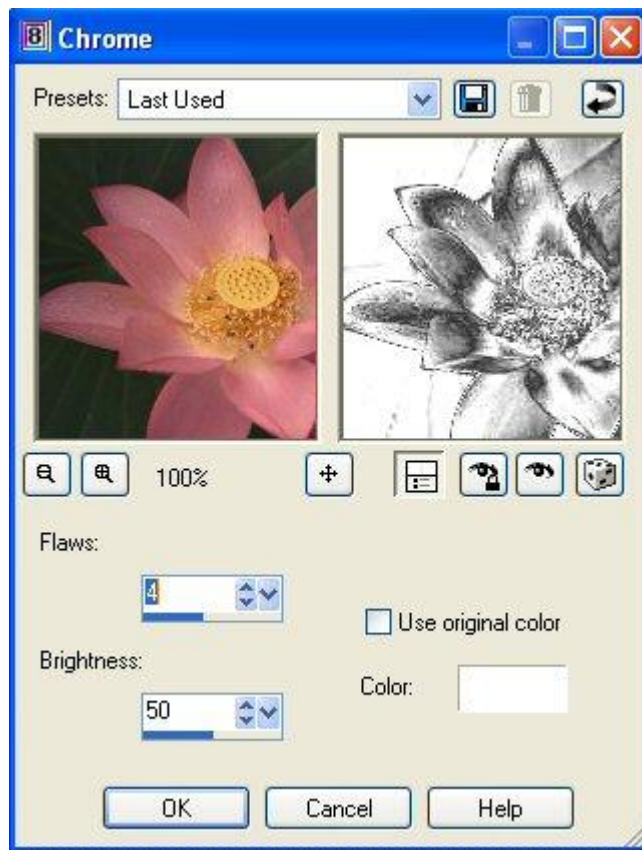


Fig. 5



Fig. 6

- *Effects -> Artistic Effects -> Colored Edges*, e seguire i settaggi di Fig. 7.

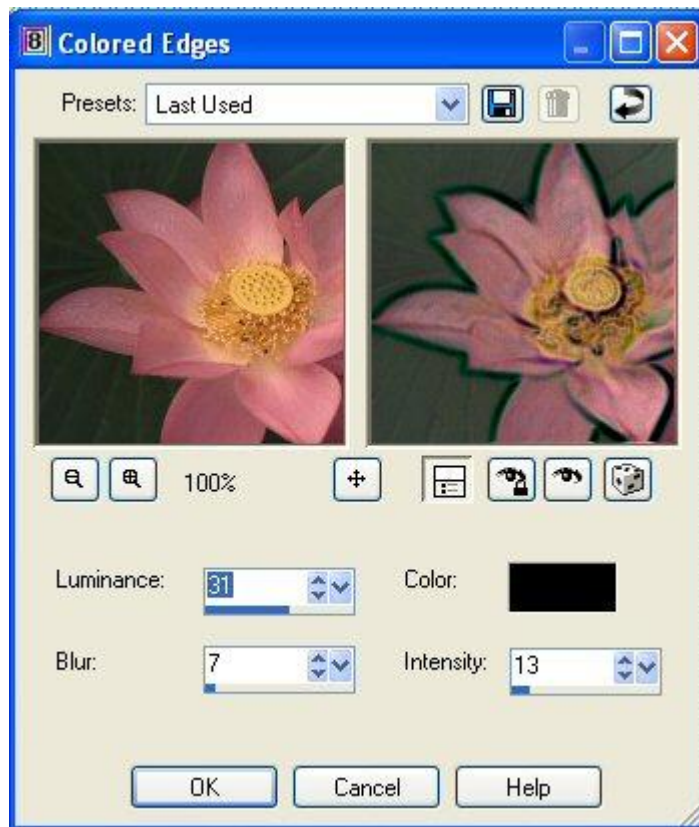


Fig. 7



Fig. 8

- *Effects -> Artistic Effects -> Colored Foils*, e seguire i settaggi di Fig. 9.

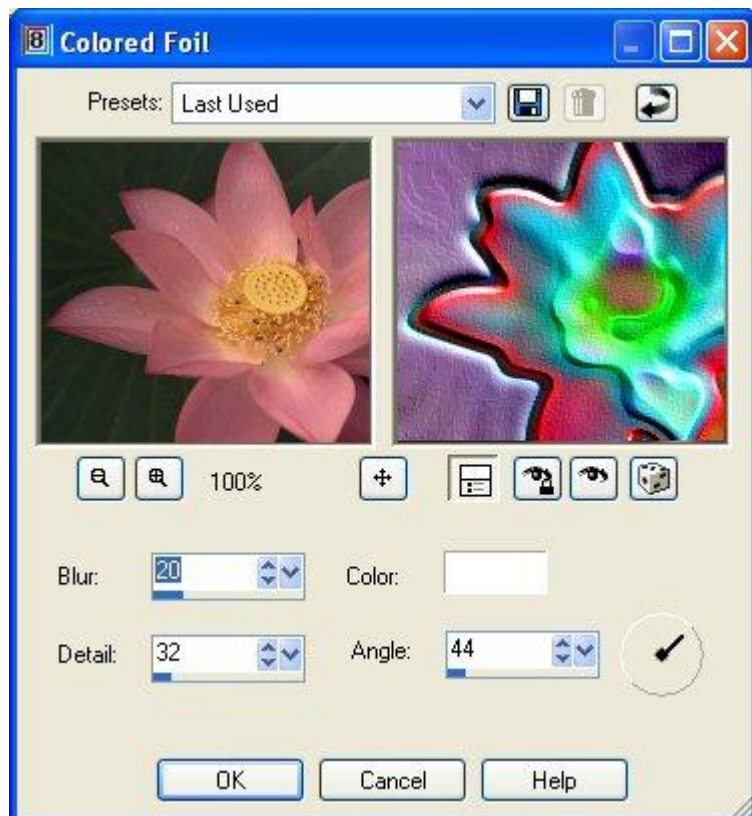


Fig. 9

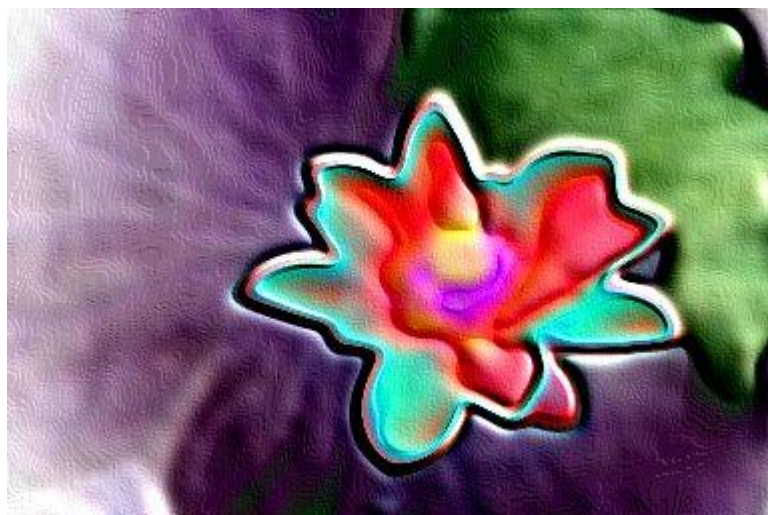


Fig. 10

- *Effects -> Artistic Effects -> Neon* e fissare un valore di Detail ( ad esempio 50 ).

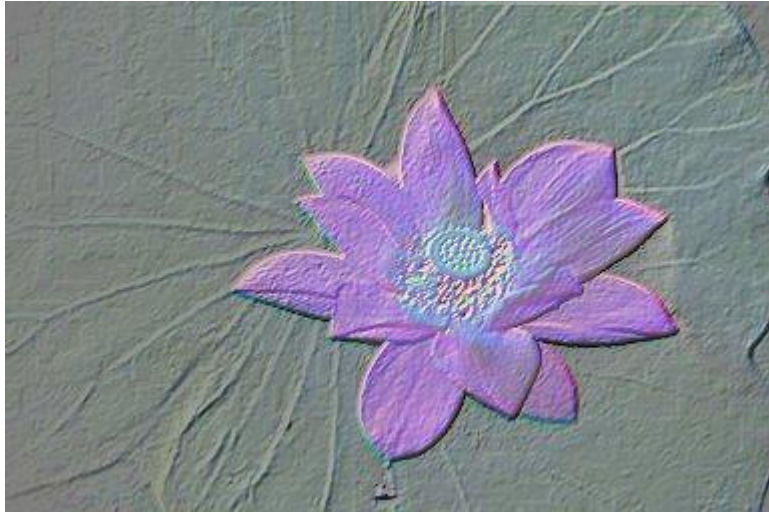


Fig. 11

- *Effects -> Artistic Effects -> Sepia Toning* e fissare un valore dell'Age.



Fig. 12